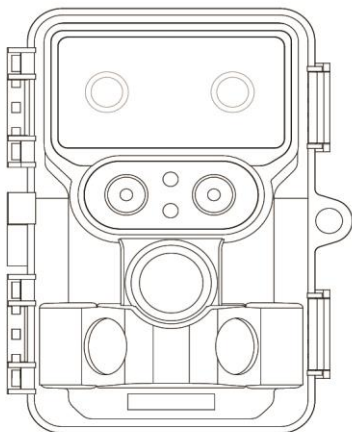


# OSWILD

Trail Cameras

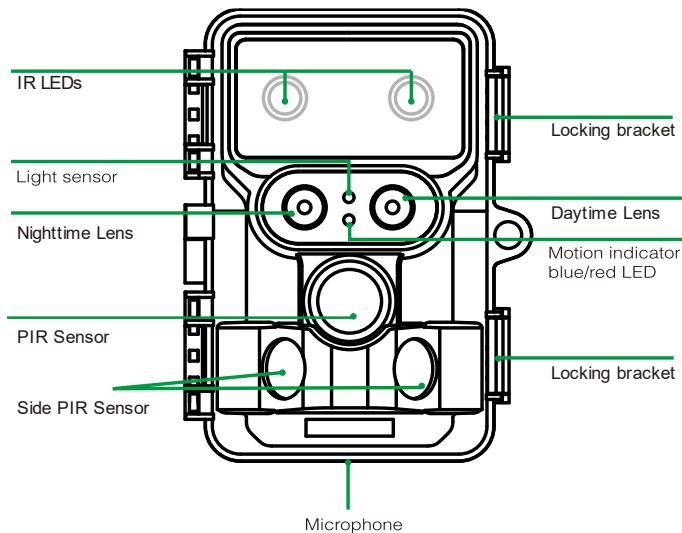
## 4K DS MAX Wi-Fi Instruction Manual



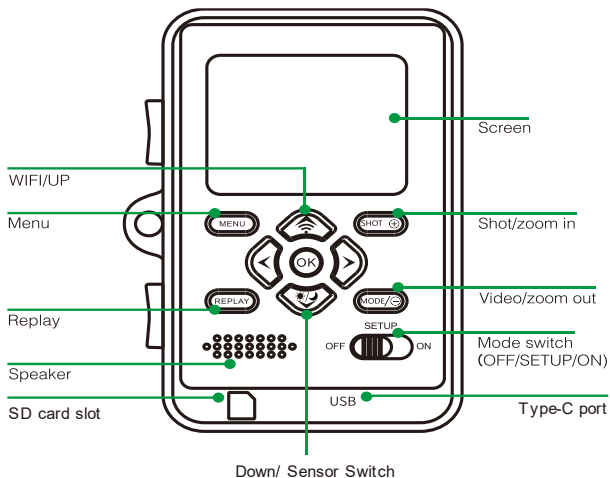


# Camera Overview

## Front View

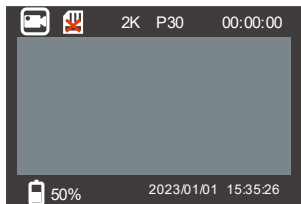
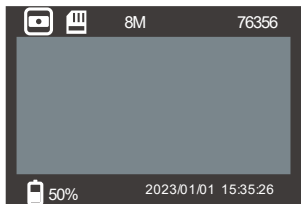







## Inside View



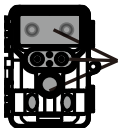
- The screen can be used to change settings or view photos and videos in the SETUP mode.
- An SD or SDHC memory card must be used for the camera to function.
- The camera can transfer images and videos to a laptop or PC using the USB C connection on the bottom of the camera

## Viewing screen indicators

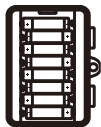


 	Photo/Video Mode
 	SD Card Status
8M / 2K P30	Current Image Resolution /Video Resolution
76356 / 00:00:00	Image/Video Capacity Left
 50%	Battery life
2023/01/01 15:35:26	Date and Time

## Quick start guide



1. Remove the protective plastic covers from the camera lenses and PIR sensors.



2. Open the battery cover and install 8 AA batteries (Energizer Lithium batteries are recommended). Alkaline batteries may be used but expect a shorter battery life. Rechargeable batteries must NOT be used, doing so will void the warranty of the camera.



3. Install a new SD card, up to 256GB. Cards of class 10 or above are recommended for recording 4K video. We recommend formatting the new SD card before use.



4. Download the free "WILDLIFE CAM" APP on your smartphone from the APP store or Play Store.



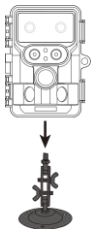
5. Open the APP and follow the prompts to connect the camera.

6. When you have decided on a position for the camera move the power switch to the ON position.

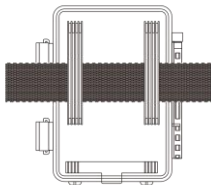


The default settings of the camera are set to 8MP photos, a 30 second interval and "Medium" PIR sensitivity.

These settings can easily be changed to suit your individual needs on the camera or on your smartphone via the APP.



1



2

7, Mount the camera using the provided tree strap or mounting socket.

## How to install the APP

OS Wild trail cameras work with an IOS and Android compatible mobile app called “WILDLIFE CAM” This can be downloaded for free from the App Store and Google Play.

The app gives you full control of all camera settings as well as the ability to view photos and videos.

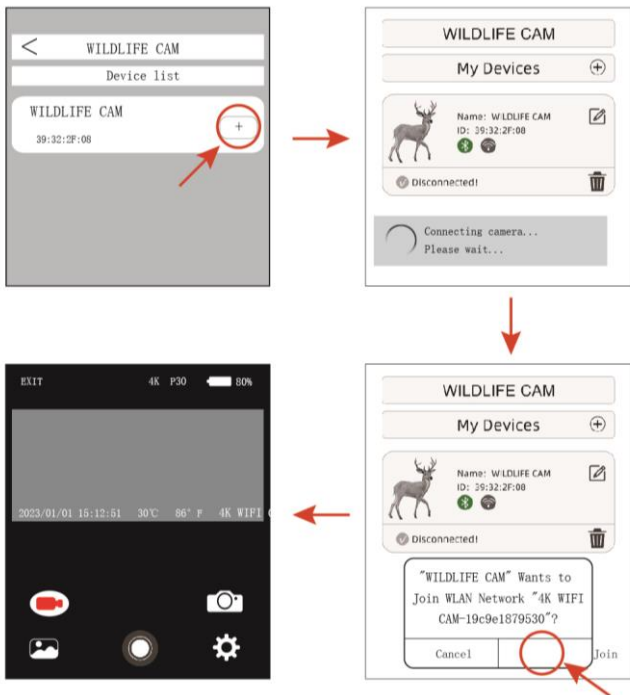
## How to connect to the APP

1. Power on the camera and press the MODE button in “SETUP” or “ON” mode.
2. Upon opening the “WILDLIFE CAM” app on your mobile device you will see the main page (Right). On the main page press the + Camera icon in the bottom right of the screen.



The following figures show the setup process.

The following images show the process for connecting to the camera via the WILDLIFE Cam app.



As shown above, when the Wi-Fi icon turns green this means the app has connected with your mobile device. The mobile device will then show the real-time preview screen.





## Note:

- Please make sure Wi-Fi and Bluetooth functions on your mobile device are set to on.
- During the app connection some popup windows may appear. Please choose OK or accept these pop ups, this allows the app to access the appropriate areas of your device in order to complete the connection.

After the app has successfully connected to the camera for the first time the app will automatically save the connected camera under the “My Devices” list. When you open the app again it will directly open the “My Devices” list. Click the selected camera in the list to connect to it.



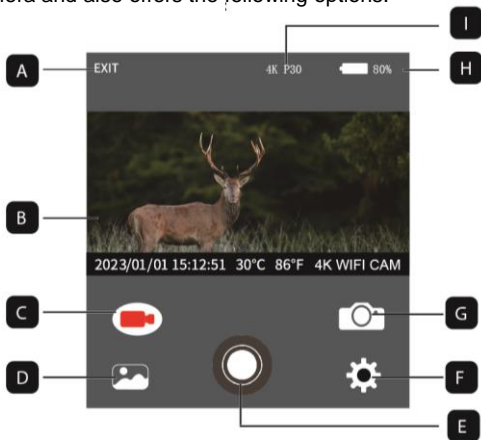
Search for the camera device

Change the camera name in the app display. This makes identifying multiple cameras much easier.

Delete the saved camera

## WILDLIFE CAM app live screen

The live screen of the app shows the live image from the trail camera and also offers the following options:



A. Exit the APP

B. Live image

C. Video mode

D. Image or video preview

E. Release button

F. Settings

G. Photo mode

H. Battery life

I. Current picture or video resolution

## Using the camera

Prior to using the camera, it is important to setup the camera. In SETUP mode you can change numerous settings which will affect the function of the camera.

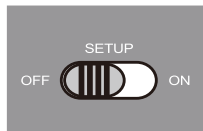
## Mode switch

Open the camera as described. The Mode switch is located towards the bottom of the inside of the camera.

**OFF:** The camera is completely switched off in the OFF mode.

**SETUP:** Select SETUP mode to adjust settings or playback photos and videos.

**ON:** The camera is activated to take photos and videos.



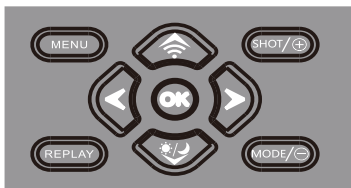
## Operating Controls

Set the mode switch to SETUP and the camera and screen turn on after a few seconds. Using the operating buttons on the back of the camera different functions can be used to control the camera.



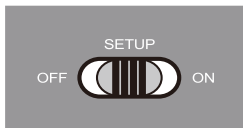
### Note:

- Always move the power switch from OFF to SETUP. If moving the switch from ON to SETUP the camera may lockup.



# Settings Menu

Prior to using the trail camera change the settings as required. Slide the mode switch to **SETUP** position to start the setup mode. Then press the **MENU** button to open the settings menus. All menu options on the camera and possible settings values are listed on the following pages. Standard settings are highlighted in bold.



- **Mode** : Photo, Video, Photo + Video

Select whether photos or videos should be taken when motion is detected. When in Photo + Video mode the camera first takes a set number of photos then records a video.

- **PIR Interval**: Default 30 secs, option 5 sec - 60 mins

Select the period the camera waits before reacting to movement after the previous photo or video is recorded. The camera does not record during this interval.

**Note** – Each usage scenario is different and therefore getting the right PIR interval is vital for efficient battery consumption.

- **PIR Sensitivity:** High/Medium/Low

- **Time Lapse:** Off/On

When “on” is selected the camera will automatically take a video/photo at the selected time interval. This is useful for sites with high activity where constant use of the PIR sensors would result in a short battery life.

Once the “On” setting is applied by pressing OK you can enter the interval time.

**Note** – In this mode the PIR function ceases to function.

- **Night shoot mode:** Auto/Colour

“Automatic”: In Automatic mode the camera selects each lens according to light conditions. In good light the 13MP Sony sensor lens is selected for colour photos/video, in poor light the 2MP sensor lens is selected. At night the 2MP sensor lens is always selected for black and white photos/video.

“Colour”: In colour mode the camera will always take color photos/video, even at night. However, the image quality will degrade in very low light conditions.

- **IR LED:** Auto/Economy/Off

Set the IR LED brightness

- **Low Bat Night Shot :** No IR Led/No Shutting

1. **No IR Led:** The camera takes photos and videos without the IR LEDs at night when battery level is low.
2. **No Shutting:** The camera does not take photos and videos at night when the battery level is low.

- **Monitoring Period:** Off/On

Set the timer to “On” if the camera should only be active during a certain time period. Once “On” is confirmed with the OK button the start and end time can be set.

**Example:** If the start time is set to 08:00 and end time is set to 20:00 the operational time is between 8am and 8pm on that day. The camera will not trigger outside this period.

- **Side PIR Setup:** Off/On

The two side PIR sensor zones provide a wider detection angle and detect more potential triggers

Scenarios where turning off the side PIR sensors can help include the presence of irrelevant objects to the edges of the field of view such as leaves and branches.



- **Image Size:** Day/Night

**Day:** 13mp is the recommended image size for this sensor.

Larger image sizes are available via interpolation.

**Night:** 2mp is the recommended image size for this sensor.

- **Picture NO:** 1P, 2P, 3P, 4P, 5P, 6P, 7P, 8P, 9P, 10P.

Select the number of photos to be taken in succession when the camera is triggered in photo mode.

- **Shutter speed:** 1/15, 1/20, 1/30



- **Resolution:** Day/Night

**Day:** Default video setting is 4K 30fps

**Night:** Default video setting is 1080P 30fps

Select the required video resolution. A higher resolution produces higher quality video but results in larger files

- **Video Length:** Default 10 sec, Optional 5 sec – 180 sec  
Specify the duration of a video recording when the camera is triggered.
- **Record Audio:** Off/On



- **Language:** Select the desired menu language.
- **Default setting:** Cancel/OK  
Press “OK” to reset the camera settings to the default values and confirm the selection by pressing the OK button.
- **Format:** Cancel/OK  
All files are deleted by formatting the memory card. Press the OK button and confirm formatting by selecting “OK”.  
We recommend formatting the memory card if it has already been used in other devices or if it is a new card.  
Caution: Ensure that files are backed up prior to formatting.
- **Date/Time:** Set date and time
- **Time Format:** 12 hour/24 hour

- **Date Stamp:** On/Off

Select "ON" to print the date, time, temperature, battery percentage and moon phase on each photo or video. Otherwise select "OFF".

- **Beep Sound:** On/OFF

- **Camera Name:** OS Wild 4K DS MAX Wi-Fi

When using multiple cameras it is useful to give each camera a name for easy identification.

- **Password Setting:** Off/On.

It is possible to set a password to lock the camera from unauthorised access.

- **Bluetooth:** Off/On

- **Wi-Fi SSID:** 4K WIFI CAM\*\*\*\*

You can use a combination of 10 digits and 26 letters to identify cameras individually.

- **Wi-Fi Password:** Default 12345678

- **Auto Wi-Fi off:** 1min/2min/3min

If the camera wi-fi hotspot is on but your mobile device is not connected the wi-fi hotspot will disconnect automatically.

- **Auto Power Off:** 3min/5min/10min/Off

If there is no operation for the selected time the camera will turn off automatically in SETUP mode.



- **Backlight:** 1 Minute, 3 Minutes, 5 Minutes, Off

The LCD monitor will automatically turn off after the selected time

- **Version:** Shows the software version of the camera
- **Mcu FW Update**

## **Positioning the trail camera**

We recommend positioning the trail camera about 5 metres from the area you want to monitor. The camera can be placed as low as 1.5-2 feet from the ground, however at this distance we find a height of 3-6 feet is optimal. At night the ideal distance for correct exposure of subjects is more than 3 metres from the camera.

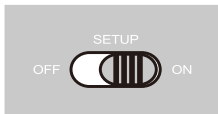
## **Motion sensor and distance test**

To test whether the camera will monitor the area you have chosen please follow the following steps:

1. Switch the camera to SETUP mode
2. Make movements in front of the camera at several positions within the subject area. Try different distances and angles from the camera.
3. If the motion indicator LED blinks, it indicates that your movement has been detected. If it does not blink then no movement was detected.

## Turning on the camera

When the camera is set to “ON” using the switch on the back of the camera it is considered to be live. When in this mode photos and videos are recorded by the triggering of the camera by movement.



The red status LED flashes for approx. 5 seconds after which the camera operates automatically.

## Connecting to a computer

1. Connect the camera to your computer using the USB cable.
2. The camera switches on automatically when the USB is connected.
3. The computer detects the camera as an additional drive under the name “Removable storage device”.
4. Double click on the device to find folder labelled “DCIM”.
5. The photos and videos are located in the sub folders of the “DCIM” folder.
6. You can copy or move photos and videos on to the computer. Alternatively, you can insert the memory card from the camera into the appropriate slot on the computer.

**Note:** Apple Macs and laptops can show an “Unknown” drive on the desktop. When clicking on this drive the program “Iphoto” is automatically started.

# Technical Specifications

<b>Day Lens</b>	13mp SONY native sensor with F1.9 aperture lens, 80-degree field of view.
<b>Night Lens</b>	2mp STARLIGHT sensor with F1.4 aperture lens, 93-degree field of view.
<b>Image Size (Day)</b>	Up to 48 megapixels. 13 megapixels native resolution.
<b>Image Size (Night)</b>	Up to 4 megapixels. 2 megapixels native resolution.
<b>Display Screen</b>	2.4" IPS 320x240 TFT-LCD Display
<b>Trigger Speed</b>	0.3 seconds with 0.2 second pre boot
<b>Video Size (Day)</b>	Up to 4K 30FPS. High frame rate 60fps available up to 2K resolution
<b>Video Size (Night)</b>	Up to 1080P 30FPS
<b>Image effectiveness</b>	Day: 1 metre to infinity Night: 3 metre to 20 metre
<b>Storage Formats</b>	Photos: JPEG Video: MPEG-4 (H.264)

<b>Detection angle</b>	Central sensor zone: 60 degree Total sensor zone: 120 degree
<b>Triggering distance</b>	20 metres
<b>PIR Sensitivity</b>	High/Medium/Low
<b>Card Type and Size</b>	SD/SDHC cards up to 256GB
<b>Waterproof</b>	IP66
<b>Power Supply</b>	8X AA batteries or external solar panel of 6V 2A rating
<b>Average battery life</b>	Approx. 6 months at 50 images per day average

**Version 07.2023**