

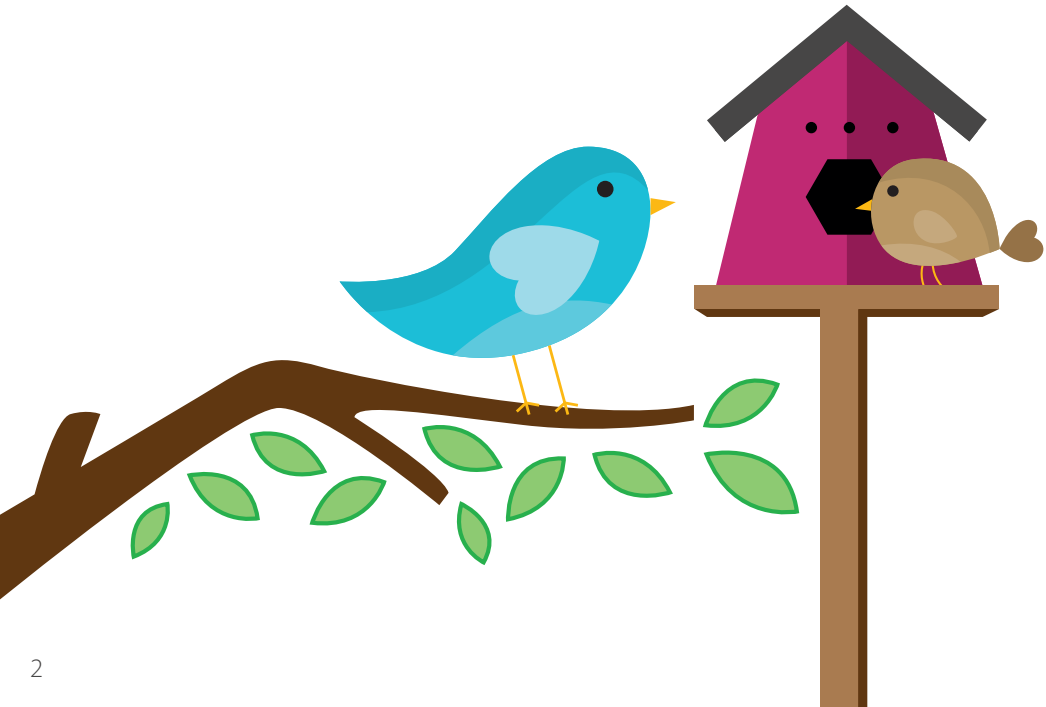


HD Wired Bird Box Camera Kit Quick Start Guide

NCTV2A/NCTV2WP/NCTV8A



Please read me before you start!



Contents

1. Camera setup
2. Connect to your TV
3. Physical installation
4. Accessories
5. Troubleshooting



Watch our setup videos

Don't know where to start?
Watch our setup videos online.
🖱️ green-feathers.co.uk/help

Congratulations! You are now the proud owner of a Green Feathers wildlife camera. For years we have been a leading provider of wildlife cameras and our bird box cameras are a number one choice for those wanting to watch wildlife in their very own garden from the comfort of the sofa.

Please take a couple of minutes to have a read through this booklet before you get started. Not only are there some helpful hints and tips, but we also have some guidelines to help you plan the installation of your camera.

With just a bit of time, a cup of tea and a friend you'll be up-and-running in no time. We hope you enjoy your camera!

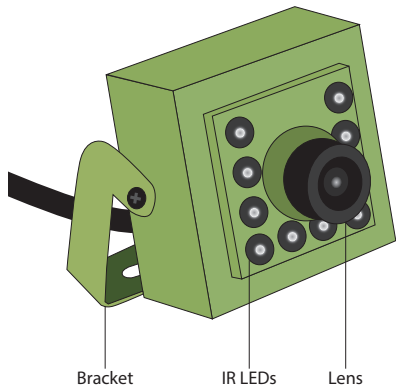
1. Camera Setup

Before installing the camera in your nest box, **wire it up inside the house first** to make sure everything is working as it should.

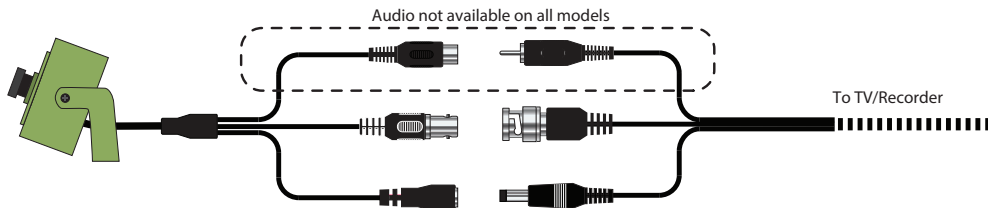
First, **remove the lens cap.**

Take your 3-way cable and plug it into the camera's trailing cable. Please note that not all camera models have audio.

To power up, **plug in the mains power supply at the other end of the cable.**



i The camera does not emit a visible glow, even when the night vision is active.



2. Connect to your TV

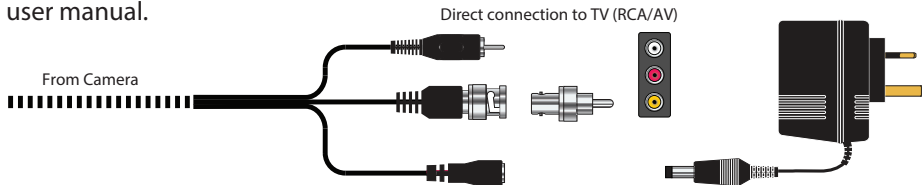
Make sure you can get an image on your TV before mounting the camera into position. Please read through the following setup options.

A. Direct Connection – SD Viewing

If your TV has RCA (phono) connections, you can connect the AV cable directly to your TV using the provided adaptor for standard definition viewing.

Simply plug in the video plug into the yellow input and the audio plug into the white or red input on your TV.

Select the correct source on your TV. This is often called 'AV1' or similar. Consult your TV user manual.

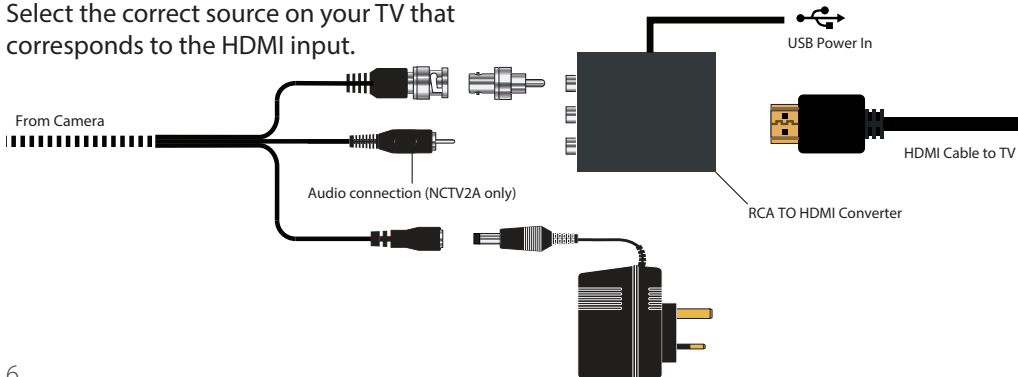


B. Connection via HDMI Upscaler

An RCA to HDMI upscaler enables you to watch upscaled images straight to your TV via an HDMI connection.

Simply plug the cable with adaptor into the converter and run the HDMI cable between the converter and your TV or monitor (see diagram below).

Select the correct source on your TV that corresponds to the HDMI input.



C. Connection via HDMI – Full HD Viewing

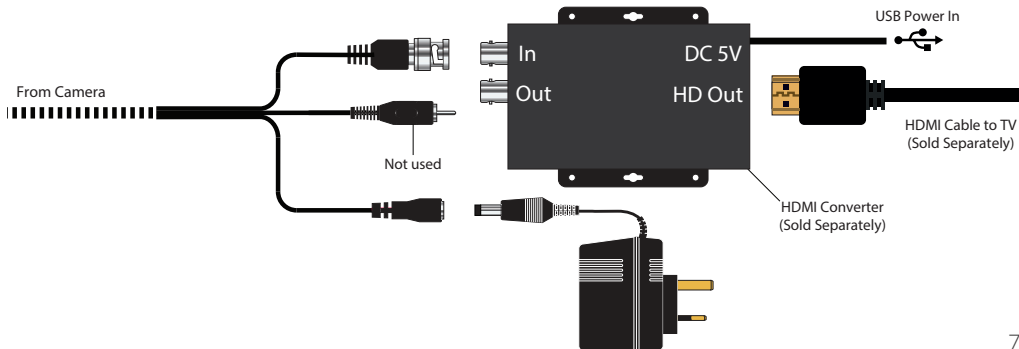
Our HDMI converter allows you to watch true 1080p HD images straight from your TV. **Plug the twist-fit connector** into the converter and run an HDMI cable between the converter and your TV or monitor.

You will need to change the camera mode to TVI (see page 9).

Select the correct source on your TV that corresponds to the HDMI input.

Need a converter?

🔍 Search on our website for **GTTV2HDMI**



D. Use with DVR Recorders

Enthusiasts can use this camera with HD DVRs using the **BNC connection** for recording.

Connect the twist-fit connector into an available channel on the rear of your recorder.

Set the camera to the compatible mode for your recorder (see opposite).

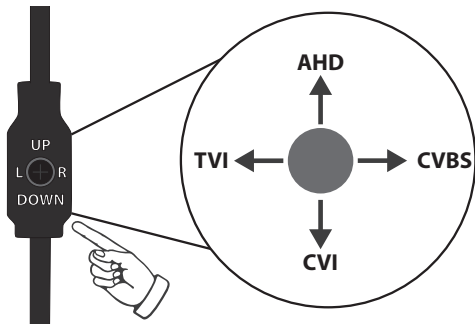
How to Set Camera Mode

This camera is compatible with different video technology modes.

The camera is set by default to CVBS.†

i If you are using our Full HD HDMI converter, you will need to **set the camera to TVI** to get the best experience.

To change the camera mode, power up the camera and press and hold the switch found on the camera cable in the direction you desire for 5 seconds.



†Model NCTV8A is set to TVI by default.

3. Physical Installation

Now you are ready to mount the camera into your nest box.

What you will need

- ✓ Camera with bracket (included)
- ✓ 5M screw (included)
- ✓ Nest box (optional)
- ✓ Screwdriver
- ✓ Mains power outlet

You may also need

- ✓ Drill
- ✓ Electrical tape
- ✓ Cable fasteners
- ✓ Power extension cable

Focussing your camera lens

Place a small bird-sized object in your bird box. You can gently twist the camera's lens to adjust the focal distance of the camera: clockwise to focus on objects that are further away or anti-clockwise to focus on closer objects. Monitor the results on your TV/monitor until you are satisfied.

Mount the Camera in Nest Box

A. Installing in one of our bird boxes:

Pass the 5M screw provided through the pre-drilled hole in the back of the box, screwing into the nut on the easy mount bracket.

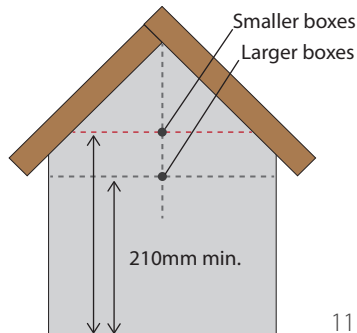
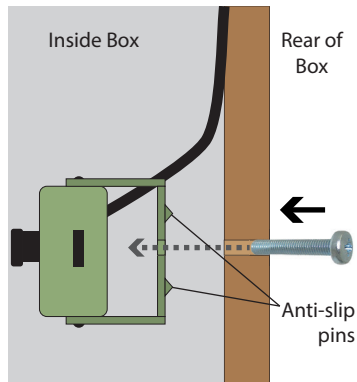
Our innovative anti-slip bracket design will hold the camera in place against the wood.

There is a gap in the eaves of the box through which to pass your cables.

B. If you do not have one of our bird boxes:

Following the diagram (right), drill a 6mm hole at or above 210mm from the base of your box. Then follow the **A** instructions above.

✓ Make sure you are happy with the angle of the camera by checking the image on the TV and making any adjustments if need be.



Wired Connection Tips

Plan beforehand where you plan to lay your cable from your bird box to your viewing device. Are you going to bury your cable and where is the entry point to your house going to be? Generally it is best to drill a single hole through your outer wall but if you have wooden window frames a small hole through the corner of the frame may be a better idea.

If you're burying the cable running through your garden then it is a good idea to protect it from the weather and burrowing animals. A simple way to do this is with some spare hose pipe. Simply run your cable through the hose, tape over the ends and bury. Some extra electrical tape over cable joints also helps keep water out.

If drilling a hole through the side of your house isn't an option then you can bury a shorter cable in the garden up to a window and keep a coiled cable inside that can be connected up when you want to view your nestbox. Taping a plastic bag over the connector of the outdoor cable should help to keep the rain off.

4. Accessories

Now it's time to install your accessories (sold separately).

Boost the Light in your Nest Box

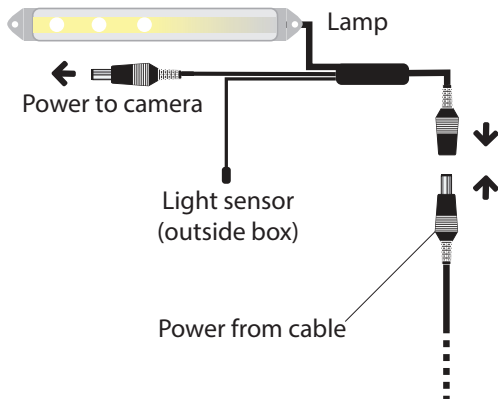
Your camera's night vision helps to improve the picture at night but you can also benefit from adding an extra light source to improve daytime images. Use one of our energy-efficient LED lamps to help with this.

Our daylight lamps automatically switch off at night to ensure the birds are not disturbed and get a good night's sleep. They provide extra light during the day to boost your camera image's vibrancy and exposure.

When using this camera kit you can power the lamp using the camera's power supply fed from the cable.

Need a Daylight LED Lamp?

 Search on our website for **BBLED3**.



5. Troubleshooting

Having trouble? Here are some answers.

I'm not seeing an image on my TV

1. Is the power supply on?

Make sure the camera's power supply is properly connected to a mains outlet.

2. Is the camera receiving power?

During operation the camera should feel warm to the touch.

Another way to check the camera is receiving power is to take the camera into a very dark space so that the night vision activates. Point a smartphone or digital camera at the front of the camera. If it is operating correctly, the camera should see a red glow from the IR LEDs.

3. Check wired connections

Make sure there are no loose connections at all points of connection.

4. Check TV source

Choose the correct source on your television. For direct connections it will be something like 'AV1' or 'EXT1' or if you are using our HDMI converter then it will be on the corresponding HDMI channel (e.g. 'HDMI1').

5. Is the HDMI converter powered up?

If you are using our HDMI converter, make sure it is powered up by using the power supply provided.

Need more help?

If you require more assistance setting up your bird box camera or you need further support then please **head to our Help website** where you'll be able to find all our support guides and videos.

Find more help online.

 green-feathers.co.uk/help

For more help visit:
green-feathers.co.uk/help

